

Battery USEAGE

1 NOV 1987

9:00 Recv Starts

Ah

9:11	1.9	3:40	9.2
9:14	2.1	3:50	9.5
9:20	3.0	4:00	10.6
9:23	3.9	4:20	11.9
9:34	4.9	4:30	12.2
9:47	5.1	4:45	13.2
9:51	5.3	5:00	13.7
10:30	5.0		
10:50	5.5		
11:00	6.3		
11:10	6.4		
11:20	6.3		
11:30	6.5		
11:35	7.5		
11:40	8.0		
11:55	7.0		
12:00	6.8		
12:20	6.7		
12:30	6.8		
12:40	7.0		
1:00	7.8		
1:20	7.4		
1:50	7.0		
2:00	7.8		
2:10	8.2		
2:20	8.5		
2:30	8.3		
2:40	8.6		
2:50	8.6		
3:00	8.4		
3:10	8.5		
3:20	9.2		
3:30	9.4		

Sunnyson Battery Usage Day 2 Nov 1-1987

TIME	Ah	used	Time	Ah	
8:00	3.0	0	3:20	13.6	10.6
8:10	3.8	.8	3:30	13.9	10.9
8:18	4.1	1.1	3:40	14.8	11.8
8:31	4.6	1.6	3:50	15.2	12.2
8:40	5.0	2.0	4:11	16.7	13.7
8:50	5.6	2.6	4:20	17.1	14.1
9:00	6.1	3.1	4:50	19.5	16.5
9:10	7.4	4.4	5:00	21.5	18.5
9:11	Flat tire				
9:20	7.7	4.7			
9:30	7.9	4.9			
Dunna. 9:33	Pneu Stop				
9:43	6.6	3.6			
10:00	7.2	4.2			
10:20	8.2	5.2			
10:30	8.5	5.5			
10:50	9.4	6.4			
11:00	9.7	6.7			
11:30	9.7	6.7			
12:00	9.6	6.6			
12:30	9.9	6.9			
1:00	9.6	6.6			
1:20	10.8	7.8			
1:30	10.4	7.4			
1:40	10.8	7.8			
1:50	11.1	8.1			
2:00	12.2	9.2			
2:10	12.7	9.7			
Tennant 2:13	Pneu Stop				
2:23	11.7	8.7			
2:30	11.7	8.7			
2:40	12.1	9.1			
3:00	12.2	9.2			

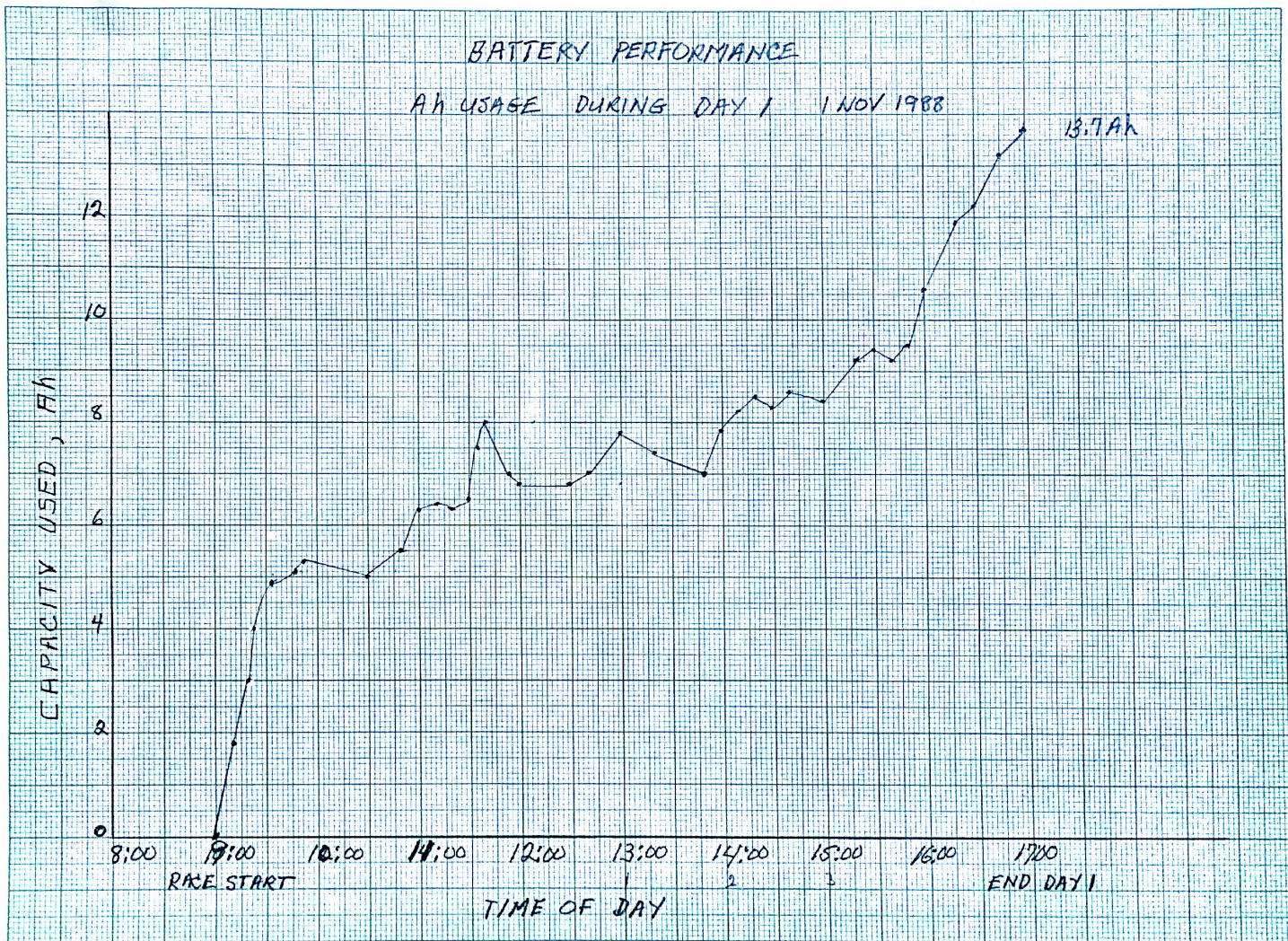
cloudy

Tennant
Creek

BATTERY PERFORMANCE

AH USAGE DURING DAY 1 1 NOV 1988

13.7 Ah



BATTERY PERFORMANCE

AH USAGE DAY 2 2 NOV 1987
DISTANCE 622 Km

